

# Country Profile

## WORLD VISION SYRIA RESPONSE



© ULUSLARARASI İNSANI YARDIMLAŞMA DERNEĞİ

Since 2011, the World Vision Syria Response has been at the forefront of addressing the Syrian crisis, with operations extending across several regions in Syria, Türkiye, and Jordan. The crisis has led to a significant displacement of people, with around 6.8 million internally displaced within Syria, over 3.65 million taking refuge in Türkiye, and 673,238 in Jordan.<sup>1</sup> The challenges have further escalated following the catastrophic earthquake that struck Northwest Syria and Southern Türkiye in the past year. This disaster resulted in over 50,000 fatalities in Türkiye<sup>2</sup> and more than 4,500 in Northwest Syria<sup>3</sup>, along with thousands injured in both regions. However, the Syrian crisis encompasses more than the aftermath of this earthquake. For over a decade, the country has been grappling with a complex array of issues

including prolonged conflict, economic instability, health crises like COVID-19 and cholera, and the recent seismic disaster. These compounding factors have plunged Syria into an unprecedented humanitarian and protection emergency, now in its 13<sup>th</sup> year.

In the wake of the February 6 earthquake that devastated Northwest Syria and Southern Türkiye, World Vision Syria Response has been a pivotal force in the response and recovery effort. The organisation launched over 50 projects in response, positively impacting nearly 1.8 million individuals. These initiatives span various sectors, including protection, WASH (Water, Sanitation and Hygiene), livelihoods, health and nutrition, and education.

<sup>1</sup> Document - SUMMARY: 3RP Regional Strategic Overview 2023 (unhcr.org)

<sup>2</sup> Humanitarian Transition Overview - Türkiye Earthquake Response (August 2023) - Türkiye | ReliefWeb

<sup>3</sup> North-west Syria | Situation Reports (unocha.org)



## ESSENTIAL NUMBERS FOR FY23



For the fiscal year 2023, our efforts enabled us to reach **2,834,481** individuals, including **1,645,522** children, through both direct and indirect project implementation.



Portfolio  
**(US\$40.8m)**



**29**  
local partners



**244** staff and  
**1,000** volunteers



**30**  
donors support our various programs  
**+21**  
World Vision support offices

Irish Emergency Alliance, Disasters Emergency Committee (DEC), The Humanitarian Coalition, Dutch Relief Alliance (DRA), Aktion Deutschland Hilft (ADH), Giro555, Ajuntament de Terrassa, Syria Cross-border Humanitarian Fund (SCHF), XTX Markets, New Zealand Ministry of Foreign Affairs and Trade, Australian Government Department of Foreign Affairs and Trade, Community Chest of Korea, German Federal Foreign Office (GFFO), UNICEF, Irish Aid, We Are Water Foundation, The Government of Hong Kong or the Government of the Hong Kong Special Administrative Region (HKSAR), Japan Platform (JPF), IrishAid, Visser Relief Fund (VRF), Ministry of Foreign Affairs of Japan, The Crisis and Support Centre – French Ministry of Foreign Affairs and International Development, Global Affairs Canada (GAC), GIZ, Bureau of Humanitarian Assistance (BHA), Austrian Development Agency (ADA), Bernard van Leer Foundation, George Washington University, Ministry for Foreign Affairs of Finland, World Health Organization (WHO), HillSong United Kingdom.

# PRIORITY SECTORS

## PROTECTION

Our approach integrates various initiatives for at-risk children, like setting up Child-Friendly Spaces (CFSs) and Women and Girls Safe Spaces (WGSS). These spaces offer psychosocial support sessions and specialised protection services, including case management. Following the earthquake, we have also introduced Emergency Child-Friendly Spaces (ECFs) and initiated specialised mental health support services, delivered by clinical psychologists. Our commitment to gender equality, safeguarding, and the prevention of sexual exploitation, abuse, and harassment (PSEAH) is comprehensive. In 2023, our child protection sector was instrumental with advocacy, elevating awareness through data-driven humanitarian reports, and complementing our existing protection programmes. These programmes feature awareness-raising sessions, case management, emergency cash assistance, psychosocial support, and capacity building.



## LIVELIHOODS

World Vision is deeply committed to enhancing the economic resilience of the most vulnerable households. Our focus is on livelihood interventions, such as income generation and cash assistance, aiming to empower households by optimising resources and implementing effective economic strategies. Our central goal is to connect individuals with opportunities that enable them to support their families' basic needs, particularly those of extremely vulnerable individuals. To achieve this, we provide Technical Vocational Educational Training (TVET), promote small enterprise development, and implement cash-for-work programmes. These initiatives are tailored to assist families in reaching vital goals, which include ensuring their children have access to education, securing a stable household income, and nurturing a hopeful outlook for their children's productive future.



## HEALTH AND NUTRITION

In the wake of the recent earthquake affecting northern Syria and southern Türkiye, the World Vision Syria Response, through its network of partners was instrumental in providing life-saving health and nutrition services. This included operating surgical hospitals, deploying mobile clinics, providing rehabilitation services, and establishing Rapid Response Teams (RRTs). Additionally, we have distributed various essential kits, such as hygiene and baby kits, to support the needs of the impacted communities. Our efforts centre on enhancing access to high-quality, equitable primary and secondary health and nutrition services. These services encompass diagnostic and treatment options for communicable diseases such as Cholera, non-communicable diseases, sexual and reproductive health, and mental health support. We also facilitate inpatient care across various specialised medical and surgical fields. In Syria, our support extends to a surveillance programme that swiftly identifies potential disease outbreaks with pandemic or epidemic risks. The World Vision Syria Response places special emphasis on the health of children and women, supporting facilities that cater to child and maternity care. These establishments offer both outpatient and inpatient specialised services for pregnant women, infants, and children, including Basic and Comprehensive Emergency Obstetric and Newborn Care (BEmONC, CEmONC).



## WATER, SANITATION AND HYGIENE (WASH)

The World Vision Syria Response is dedicated to ensuring access to adequate and resilient water and sanitation facilities, especially for vulnerable Syrian internally displaced persons (IDPs), refugees, and host communities. Our WASH (Water, Sanitation and Hygiene) programmes are tailored to meet humanitarian needs arising from the prolonged conflict in Syria, climate change impact, and other global crises that have led to inadequate basic WASH services and infrastructure. In response to the 2022 cholera outbreak and the 2023 Syria-Türkiye earthquake, our team developed and executed various WASH interventions and activities. These efforts include improving water supply, offering sanitation services, building latrines, installing water and sewerage systems, managing solid waste, and enhancing WASH facilities in schools and health centres. We also focus on promoting hygiene, behaviour change, and distributing hygiene kits in different operational regions. Additionally, our initiatives are aimed at providing long-term sustainable solutions, improving services, and fostering resilience within the WASH sector.



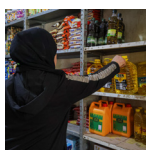
## EDUCATION

At the heart of our mission is the goal to ensure that girls and boys have equal access to educational opportunities. The World Vision Syria Response is dedicated to Education in Emergencies, with a focus across Syria and Jordan. In Jordan, especially in the northern regions with a high refugee population, we provide non-formal education in formal schools operating in shifts. Our efforts are geared towards promoting inclusive access to education, enhancing practical English language skills, and raising awareness about the dangers of violence. A significant emphasis is placed on Early Childhood Education and Development, particularly for preschool-aged children and their caregivers in Azraq camp. Here, we provide training in positive parenting techniques to support the children's learning and development. In Syria, our approach to education for girls and boys is comprehensive, embracing both formal and non-formal education methods. This includes schooling in various settings, such as learning centres and schools, both inside and outside IDP camps. Our aim is to provide a well-rounded educational support system for children facing the challenges of these environments.



## CASH AND VOUCHER PROGRAMME (CVP)

The World Vision Syria Response's Cash and Voucher-Based Programming (CVP) stands as a vital component in fostering child well-being. It not only offers immediate survival assistance but also supports children and their caregivers in overcoming poverty-related challenges. This approach to humanitarian aid emphasises dignity for those affected by emergencies, offering them choice, control, and flexibility, and plays a crucial role in building resilience. By centring people in humanitarian responses, cash and voucher-based programming effectively addresses critical needs. In emergency situations like the devastating 2023 Syria-Türkiye earthquake, when markets remained functional, providing cash assistance quickly emerged as an effective first-line response. It enabled households to meet their immediate and diverse urgent needs, helping to lessen the impact of the crisis. During this emergency, multipurpose cash assistance was particularly beneficial in covering various needs of vulnerable survivors. This included assistance for relocation to less affected areas and covering transportation costs in both Türkiye and northwest Syria. Amidst challenges like border closures, service suspensions, and movement restrictions that hindered operations like in-kind or income-generating activities, cash responses demonstrated significant effectiveness and efficiency, with positive outcomes in multiple sectors, extending beyond food security.



## ENVIRONMENTAL AND ANTICIPATORY ACTION

The World Vision Syria Response has initiated research and interventions related to climate change and anticipatory action. Our aim is to establish anticipatory action protocols for selected areas exposed to disasters, thereby enhancing readiness and pre-disaster action capacity at the community level. Furthermore, we are conducting studies to mitigate the impacts of flash floods and drought in Jordan and Syria. This involves carrying out feasibility studies for Anticipatory Action, consulting and coordinating with the community of practice on Anticipatory Action, and identifying risks, hazards, and locations for anticipatory action focus in collaboration with stakeholders. The World Vision Syria Response has launched a new project focused on disaster risk reduction, utilising a community-based approach. This includes forming community committees and providing capacity building and funding to assist these committees in executing various initiatives. Additionally, support is offered at the school level to promote awareness and back school-based initiatives. This project is designed to bolster the resilience and capacity of individuals and communities in preparing for, mitigating, responding to, and recovering from disaster risks. The strategy adopts a holistic approach, integrating measures that boost knowledge, along with both structural and non-structural measures, to reduce the overall impact of disasters.



## FAITH AND DEVELOPMENT

The World Vision Syria Response is implementing two modules under Faith and Development:

1. Channels of Hope for Child Protection (CoH CP) is an innovative approach designed to empower faith leaders and communities to combat violence against children, including abuse, neglect, and exploitation. This methodology equips faith leaders with essential information and insights into their religious traditions, transforming them into strong advocates for the welfare of vulnerable children. In Syria and Jordan, we have been conducting 'Training of Trainers' workshops in collaboration with local partners, targeting faith leaders and child protection advocates.
2. Celebrating Families focuses on ensuring that families, particularly the most vulnerable, foster positive, loving relationships and maintain hope and a vision for the future. It addresses beliefs, convictions, and cultures that contribute to harmful attitudes, norms, values, and practices in child-rearing. World Vision Syria Response facilitates these activities through trusted faith-based organisations (FBOs), which receive capacity-building training for session facilitation to effectively reach beneficiaries. This training provides the knowledge and skills necessary to create a safe environment where children are loved, encouraged to explore, and discover God.



For more information, please visit:



## CONTACT INFORMATION

Hamzah Barhameyeh  
Syria Response Advocacy & Communications Manager  
Email: hamzah\_barhameyeh@wvi.org

